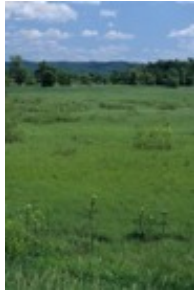


Trempealeau River Meadow Botany Blitz

2009 Date to be Determined



WI DNR photo



Photo by R. Freckmann

Trempealeau River Meadow State Natural Area features a large undisturbed sedge meadow, a shallow marsh, as well as deep water marshes in the old oxbows of the river. (WI DNR)

The last of three Trempealeau River Botany Blitzes will cover the far eastern side of the property which will be marshy and also try to cover the area along Trempealeau River which is the eastern boundary of the site.

www.dnr.state.wi.us/ORG/land/er/sna/sna346.htm *State Natural Area #346*, located in Buffalo County.

Site leader: Tim Gerber
(608) 785-6977 gerber.dani@uwlax.edu

Hasteola suaveolens
(Photo by Merel Black)

Bring along: sturdy footwear for uneven terrain, field guides, hand lenses, pens or pencils, and any other identification and mapping aids you may have, such as a GPS unit. Also bring boots for Trempealeau River Meadow and North Fork.

*The full 2008 Trempealeau River Meadow report, including methodology and plant species list is available on the BCW website:
<http://wisplants.uwsp.edu/BCW/PLANTS%20OF%20Trempealeau%20R%20Meadows%20Fall%202008.pdf>

2008 Trempealeau River Meadow Botany Blitz Report

D. T. Gerber, Tom Eddy, Bob Freckmann, Jessica Johnston-Walsh, Brian Neil, and Laurie Yahr

The second blitz at the Trempealeau River Meadow State Natural Area (SNA) in Buffalo County, Wisconsin was held on September 6, 2008. Compiling information from sight records resulted in a checklist of 107 vascular plant species. These numbers are not considered complete because time did not allow a thorough exploration of all parts of the SNA, and because ephemeral, early-, and mid-summer blooming vascular plant taxa may have been missed along the transect used during this blitz. One "Special Concern" species, *Hasteola suaveolens*, (Family Asteraceae, Common name: sweet Indian plantain) was observed.



Six botany blitz participants (see author list above) worked as one team for four hours along a pre-selected transect. The team was provided with a map and description of the SNA, a WI Department of Natural Resources "Plant Community Species List" for sedge meadow, tall shrub, cattail marsh, and a Wisconsin State

Herbarium species list for Buffalo Co. Species along four transects have been previously recorded in Gerber et. al. Participants during this blitz collectively followed a fifth transect established on site to best sample the central portion of the property along a 130° SE line from River Road running across a sedge meadow into a shrub carr. Transect #5 included areas with more woody vegetation relative to the areas covered during the 2007 Botany Blitz.*