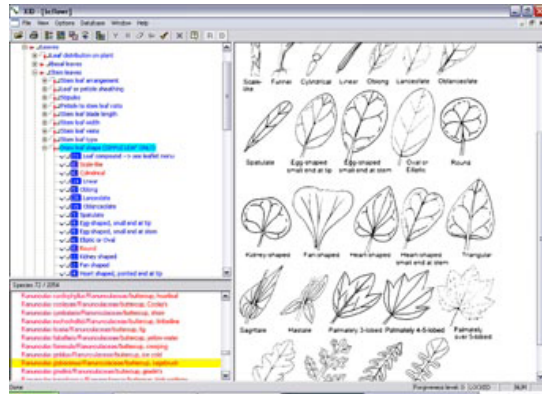


Some are grainy but the resolution can be improved by single clicking on a picture. Among all the options that this imaginative program contains, the Analyze and Forgiveness options are particularly attractive. Before using either or both the number of possible species should be significantly reduced. Selecting the Analyze feature opens a page with a list of features which the program has determined will be useful in identifying the unknown plant. The program searches the data of the remaining possible species and presents a list of features that are most likely to distinguish between them. The Forgiveness option can be used when the specimen is believed to be a species that is not on the list of possible species. The user selects one of four levels. Briefly, it allows, at the Level 1 choice, any one feature that has been marked to be incorrect without eliminating a species. And Level 2 will allow any two of the marked features to be incorrect without eliminating a species, and etc. Forgiveness allows us to incorrectly evaluate a feature or two and still make a correct identification. The XID program ran very well on both an ancient PC (64 megs RAM and Windows 98) and a new laptop (1 gig RAM and Windows XP). This program is an identification tool and a learning tool. I enjoyed using it, especially to test my knowledge of individual species and their features. Using this type of key where you select the features has advantages over dichotomous keys that dictate the features to be evaluated. Such as when you have a spring wildflower and the key asks for seed features. Screen photos - Jim Ginns



FLORA ID INTERACTIVE PLANT KEYS AND COLOR PHOTOS FOR WISCONSIN

Bruce Barnes
Flora ID Northwest, 731 NW 5th,
Pendleton, OR 97801
www.xidservices.com/FID
Windows 98 - XP, \$100
\$75 for BCW members
(see www.npsbc.org for details)

SAVE THE DATE!!!

Michigan Botanical Club and the
North Woods Native Plant Society
invite **BCW** members to a "miniforay,"
Sat.-Sun., July 26-27, 2008
in the Trap Hills in Michigan's
western Upper Peninsula.

The *NWNPS* and the *MBC* are organizing a "miniforay" that will be open to all *NWNPS*, *MBC* and *BCW* members. This miniforay will be based in the Bergland, Michigan area, and we will visit the Trap Hills, one of the U.P.'s hidden gems.

This is a remarkable place on the fringe of our consciousness for those of more southern climes. This may be a once-in-a-lifetime opportunity to see these remote scenic botanical sites close up with local experts. The area features old-growth hemlock, spectacular vistas, rocky outcrops, steep slopes, and misty creek valleys, with species that are unique to the area, and not likely to be found in the lower peninsula or southern Wisconsin.

Michigan botanists are looking forward to visiting with their colleagues from the other side of Lake Michigan and invite all *BCW* members to attend.

The event will run Saturday and Sunday, and will include half-day and whole-day field trips and a dinner Saturday evening. Both motel and camping options will be available. Attendance may be limited.

Registration and other details will be available in late April through the *NWNPS* email list and on the *MBC* website (<http://www.michbotclub.org/>).

For more information, contact Sherry Zoars at thezoars@excite.com.

Did you know...

*The Botanical Club of Wisconsin is celebrating
the BIG 40 this year!*